

We would like to thank  
**Concordia University** for  
supporting this event.



## FALL WORKSHOP



Paving the Road to  
Language Learning Success

Concordia University, River Forest IL

Saturday, **October 26, 2013**

### REGISTRATION FEES

No need to pre-register!  
Registration is on-site.  
\$15 non-members and  
\$10 members. Pay by  
cash or check. FREE to  
new members who join  
ITBE.

### SCHEDULE

**8:30am-9:00am -**

On-Site Registration and  
Publishers Exhibits

**9:00am-9:55am -**  
Breakout Sessions

**10:00am – 10:30am –**  
SIG meetings

**10:30am – 11:00am –**  
Publishers Exhibits and  
Refreshments

**11:00am – 12:00pm –**  
Keynote session

**12:05pm- 1:00pm–**  
Breakout Sessions

**9:00am-9:55am**  
**Breakout Session**  
**Presenter: Zoe McManmon**  
**Room: 341**

**Title :** Developing the  
bridge: Biliteracy through  
student writing and jour-  
naling **Grades: K-12**

**Description:** How can we  
implement a bridge for bilin-  
gual/ESL students through a  
writing curriculum? The  
presentation will focus on  
student writing samples  
that demonstrate biliteracy,  
and the instructional setting  
that leads to learning and  
growth for these students.

**Bio:** Zoe McManmon has  
twelve years' experience  
teaching ESL and bilingual  
children and adults in the  
Chicago area. She is a Ph.D.  
candidate in Hispanic Lin-  
guistics at University of Illi-  
nois, focusing on Bilingual-  
ism, Heritage Languages,  
and Sociolinguistics, in par-  
ticular relating to Spanish  
language use in Chicago.

**Affiliation:** University of  
Illinois-Chicago

**9:00 am-9:55am**  
**Breakout Session**  
**Presenter : James Ahikpa**  
**Room: 349**

**Title:** Video or no video:  
Teaching with an instruction-  
al video **Grades: K-12**

**Description:** Video or no vid-  
eo ? This presentation pre-  
sents the rules for selecting  
and using instructional videos  
in a classroom followed by a  
hand-on activity with partici-  
pants. An informal discussion  
about the effectiveness of  
technology in a classroom  
will follow.

**Bio:** James Ahikpa graduated  
with a Masters Degree in  
TESOL from Southern Illinois  
University-Carbondale. He  
also earned a Masters Degree  
in English language and litera-  
ture from the University of  
Abidjan ( Ivory Coast). He  
taught English to High School  
students in Abidjan.He spe-  
cializes in Computer-Assisted  
Language Learning. He is the  
author of a book titled : ESL  
vocabulary learning with ani-  
mated vs.still cartoon pic-  
tures: A research work for  
educators.

**Affiliation:** Southern Illinois  
University-Carbondale

**9:00am-9:55am**  
**Breakout Session**  
**Presenter : Gevik Anbarchian**  
**Room: 286**

**Title:** Using Painting to Teach  
Critical Thinking and Academic  
Writing **HigherEd/AdultEd**

**Description:** Gevik will  
demonstrate his approach to  
using painting to teach critical  
thinking and academic writing  
to both high school and college  
students. In particular, he will  
focus on the work of Pablo  
Picasso, Frida Kahlo and Karl  
Buloff. Gevik will provide  
participants ready-to-use  
worksheets and essay samples.  
As well as ways to expand his  
approach to other media such  
as photography, film and  
literature.

**Bio:** Gevik Anbarchian has  
been teaching ELL, English and  
Reading at Niles West and  
Niles North High Schools for  
the past fifteen years.  
Previously he taught ELL at the  
American University of  
Armenia and Oakton  
Community College Gevik has a  
BA in English and an MA in ESL  
Education from the University  
of Maryland Baltimore  
(UMBC). He also has an MA in  
Reading from Northeastern  
Illinois University. He has  
served on the ITBE board the  
past five years.

**Affiliation:** Niles Township High  
Schools, District 219

**Christopher Center Concordia University**  
**7400 Augusta Street, River Forest, IL 60305**  
Free parking at the university parking garage  
located near the northeast corner of the  
campus.

**9:00am-9:55am**  
**Breakout Session**  
**Presenter : Hyun-Ju Kim**  
**Room: 251**

**Title:** Use of Codeswitching in an EFL Educational Setting **HigherEd/AdultEd**

**Description:** This study involves a small-scale investigation of codeswitching in Korean university classrooms. The perceptions of the use and the effectiveness of codeswitching were investigated from 23 instructors and 765 students in various fields at a Korean university. In addition, the actual use of codeswitching in the classroom by an instructor, teaching the theories of English education, was investigated.

**Bio:** Hyun-Ju Kim is an associate professor of English at Dankook University in Korea, where she teaches undergraduate and graduate courses in TESL, language testing, and applied linguistics. She received her PhD in the program of Foreign Language and ESL Education at the University of Iowa. Her research interests are in creativity in pedagogy, World Englishes, and ethical L2 assessment. She is currently a Visiting Scholar in the Department of Instructional Systems Technology in the College of Education at Indiana University, Bloomington, IN.

**Affiliation:** Dankook University, Korea

**11:00am-12:00 Keynote Speaker**  
**Presenter: Ilyse Leland**  
**Room: 200**

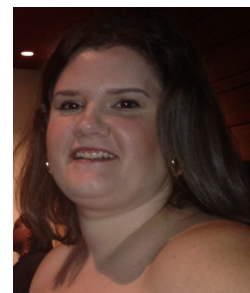
**Title:** Every Teacher is a Teacher of ELLs

**Description:** How can we continue to advocate for ELLs in the shadow of immigration reform, increased local, state and federal standards and accountability, dismal graduation rates, and the daily ongoing struggles in the classroom?

In order to succeed in our mission, we must create a shared sense of responsibility for teaching ELLs, as we are all active learners of English who benefit from language support.

**Bio:** Ilyse has worked in the field of ELL and foreign language education for the past 27 years. She has worked in various capacities as a program administrator (K-8 and adult ed.), instructor (pre-K-grad school), teacher trainer, curriculum designer, textbook writer and editor, oral proficiency tester, test developer, and compliance officer. She is currently employed as the Director of ELL Services in Cicero School District 99.

**Affiliation:** Cicero School District 99



Zoe McManmon



James Ahikpa



Gevik Anbarchian



Hyun-Ju Kim



Ilyse Leland

**CPDUs and Adult Professional Development endorsements will be available at this workshop!**

**Write for the ITBE LINK!**

We accept Feature Articles, Teaching Tips, Book/Resource Reviews, and News from or about ITBE members!

Next Deadline: December 31, 2013

For more details go to:

[http://www.itbe.org/submission\\_guidelines.php](http://www.itbe.org/submission_guidelines.php)

**12:05pm-1:00 pm**  
**Breakout Session**  
**Presenter: Joanne Sellen**  
**Room: 341**

**Title:** Techniques for Addressing WIDA Writing Standards **Grades: K-12**

**Description:** WIDA standards in grades 9-12 require ELLs to compose narratives which demonstrate the elaboration of language. This is challenging as this requires a native-speaker like repertoire of vocabulary. In this workshop we will explore activities to assist ELLs' writing development.

**Bio:** Joanne Sellen, Ph.D. is an Assistant Professor in the Department of Education and Interdisciplinary Studies at Western Illinois University. She teaches ESL and Bilingual Methods, Assessment and Sociolinguistics.

**Affiliation:** Western Illinois University

**12:05pm-1:00 pm**  
**Breakout Session**  
**Presenter: Reiko Akada**  
**Room: 286**

**Title:** The role of cultural awareness in English learning in Japan **HigherEd/AdultEd**

**Description:** Japanese is quite different from English, such as word order and social interaction. Since they are strongly related to Japanese culture, they can become problematic for Japanese learners of English. The presenter will show samples of sentences written by Japanese students and discuss how to remedy the problems.

**Bio:** Reiko Okada is a professor of the Foreign Language Center at Tokai University in Japan. She has been teaching EFL in Japan for over twenty years. Her research interests include grammar learning, cultural awareness and critical thinking.

**Affiliation:** Tokai University, Japan

**12:05pm-1:00 pm**  
**Breakout Session**  
**Presenters: Anastasia McNulty/Valerie Jones**  
**Room: 349**

**Title:** Over and Underrepresentation of ELL students in Special Education Programs. **Grades: K-12**

**Description:** The presenters will provide an overview of the issues regarding over and underrepresentation of ELLs in Special Education Programs including placement, testing and eligibility. Language acquisition processes and assessment strategies that can aid the placement of ELLs will be shared.

**Bio:** Valerie Jones, PhD is Assistant Professor of Special Education at Concordia University Chicago, Department of Teaching, Learning and Diversity. She teaches practicum courses and courses focused on special education characteristics, instructional strategies, and assessment.

Anastasia McNulty, PhD is an Associate Professor of ESL at Concordia University Chicago, Department of Teaching, Learning and Diversity. She teaches graduate courses in the areas of language acquisition, ESL methods, language, culture and assessment.

**Affiliation:** Concordia University-Chicago

**12:05pm-1:00 pm**  
**Breakout Session**  
**Presenter: Hyun-Ju Kim**  
**Room: 251** **Title:** Teaching English for the Real World **HigherEd/AdultEd**

**Description:** The phenomena of world Englishes have been the considerable issue over past decades. In this research, I examined the English teachers' and learners' perspectives on world Englishes and their preferences for teaching and learning different varieties of English. The analysis suggests the challenges and creation of new teaching methods of English.

**Bio/Affiliation:** See previous page!



Joanne Sellen



Anastasia McNulty



Valerie Jones



Reiko Okada





*Illinois TESOL-BE 40th  
Annual Convention*

February 28—March 1, 2014

Wyndham Lisle-Chicago Hotel &  
Executive Meeting Center



**THANK YOU!**

TO THESE PUBLISHERS AND PUBLISHERS REPRESENTATIVES FOR SUPPORTING *THE FALL 2013 WORKSHOP!*

STEVEN MARSTEN, MARSTEN PUBLISHING GROUP

LINDA BABAT, NATIONAL GEOGRAPHIC LEARNING/HEINLE

CAROL LARSEN, NEW READERS PRESS/PROLITERACY

Illinois TESOL-BE (ITBE) invites professionals involved with English language learners to submit proposals for presentations at the 2014 annual convention.

The ITBE 2014 Convention welcomes proposals from diverse perspectives that address our theme: Milestones in Learning: ITBE 40 Years On. We also invite proposals related to all aspects of ESL/EAP/IEP/CALL/EFL best practices for instruction, materials development, program administration, teacher training, and professional development in various settings.

Proposals are being accepted for the following formats: 60-minute Academic Presentation, 20-minute Tech Showcase, and 60-minute Exhibitor Demonstration Session. Online submissions only will be accepted.

60-minute Academic Presentation: Please note that this is an "academic" session as opposed to "commercial" exhibitor/publisher session. This is simply a traditional presentation, and all types of practice-based and research-based proposals welcome.

20-minute Tech Showcase: Short interactive presentation showcasing computer application, websites, or programs that you have successfully used for language teaching. (Internet, LCD projectors and screen will be provided at no charge. You must bring your own laptop.)

60-minute Exhibitor Demonstration Session (Purchased): For publishers/exhibitors who have already purchased a demo room. See Information for Publishers and Exhibitors. Or contact [ads-exhibits@itbe.org](mailto:ads-exhibits@itbe.org). (Deadline to submit session information is December 11).

If you have any questions about the 2014 Convention or would like to volunteer to help out with the preparations for the conference, please contact:

Debbie Sternecky, Convention Chair, at [convention@itbe.org](mailto:convention@itbe.org) (general inquiries)

Khrystyna Sanborn, Convention Proposals Chair at [proposals@itbe.org](mailto:proposals@itbe.org) (proposal inquiries)

Marsha Santelli, Director of Exhibits and Advertising, at [ads-exhibits@itbe.org](mailto:ads-exhibits@itbe.org) (Publishers and exhibitors inquiries)

To submit a proposal go to:

[http://itbe.org/convention\\_proposals.php](http://itbe.org/convention_proposals.php)